

PANDORA

AUDIO / LICHT / VIDEO

Pandora Audio

<p>FOH 1 Soundcraft VI4 48/24/8AES</p> <ul style="list-style-type: none"> • LocalRack <ul style="list-style-type: none"> ○ 16 Line-Inputs ○ 16 Line-Outputs ○ 3 Mic-Inputs ○ 8 AES-Inputs ○ 8 AES-Outputs • StageRack <ul style="list-style-type: none"> ○ 48 Inputs ○ 16 Outputs ○ 8 AES-Outputs <p>1 Passieve Split 48 ch</p> <ul style="list-style-type: none"> • 48 In/Outputs - XLR and LK37 • LK150 -> FOH Rack • LK150 -> MON Rack • 4x Socapex for broadcast <p>1 Denon - DN-500R SD/USB Recorder</p> <p>PA 4 d&b audiotechnik C4-TOP Loudspeaker NL4 6 d&b audiotechnik C4-SUB Subwoofer NL4 2 d&b audiotechnik C7-TOP Loudspeaker NL4 4 d&b audiotechnik J Subwoofer NL4 4 d&b audiotechnik T10 Loudspeaker NL4 4 d&b audiotechnik D80 Amplifier NL4 2 d&b audiotechnik D6 Amplifier NL4</p> <p>Main PA (Variable depth 1 - 6 mtr): 2x C4-Top flown per side 2x C4-Sub flown per side 2x J-Sub stacked per side</p> <p>Rear PA (Dance): 1x C7-Top flown per side 1x C4-Sub flown per side</p> <p>Rear Balcony: 2x T-10 flown per side</p> <p>Side Balcony: 2x T-10 flown per side</p> <p>Speakers amplified by d&b audiotechnik D80 Amplifier</p>	<p>CONTROL 1 d&b audiotechnik R1 Software</p> <p>MONMIX 1 DiGiCo SD8/24 incl D2-rack 48/24/8 AES</p> <ul style="list-style-type: none"> • Local <ul style="list-style-type: none"> ○ 8 Local-inputs ○ 8 Local-outputs ○ 4 Local AES-inputs ○ 4 Local AES-outputs • Rack <ul style="list-style-type: none"> ○ 48 Rack-inputs ○ 16 Rack-outputs ○ 8 Rack AES-outputs <p>MON 2 d&b audiotechnik M4 Monitor NL4 8 d&b audiotechnik M6 Monitor NL4 3 d&b audiotechnik D80 Amplifier NL4</p> <ul style="list-style-type: none"> • 12x Monitor groups Passive, OR • 6x Monitor groups Active <p>MIC 1 Shure - Beta 56A 4 Sennheiser - E904 2 Sennheiser - E906 8 Shure - SM58-LCE 2 Shure - Beta 58A 2 AKG - C214 4 Shure - KSM137/SL 1 Shure - Beta 52A 1 Shure - Beta 91A 8 Shure - SM57-LCE 2 Shure - Beta 57A 4 Sennheiser - MD421 1 Shure - B52 4 Sennheiser - E 604</p> <p>2 Shure - ULXD2/B58 Wireless ULXD2/Beta 58A Handheld 1 Shure - ULXD4DE Wireless Dual Receiver, two channel</p> <p>DI 4 Radial - ProD1 8 Radial - Pro48 4 Radial - ProD2 2 ASL TR2</p>
---	---

Pandora Lights

DESK

- 1x Highend Hog4 Roadhog (software v3.1 (b1078))
- 1x hog3 faderwing

All lights are controlled by Art-Net, see patchlist for details!

DIMMERS

- 48x Etc sensorrack 2,3kW
- 12x dimmerchannel 2,3kW in mobile rack on stagefloor

CONVENTIONAL

- 8x Showtec cateye blinder 500W
- 6x Par64 floorcan 1kW medium

INTELLIGENT

- 16x Martin Quantum spot
- 18x Martin Mac Aura
- 6x Martin Atomic Strobe
- 28x Cls ledpar RGBAW+UW
- 11X Cls pixelbar tri colore rgb

HOUSELIGHTS

- 7X CLS warmwhite (balcony+sidestage)

DATA

- 2x Cat6A S.R.
- 2x Cat6A FOH (all cat6A patchable)
- 6x DMX out (3x S.L., 3x S.R.)
- 3x DMX in FOH

FRONTLIGHT

- 10x Robert Juliat 16-36deg 1kW
- 6x Robert Juliat PC 1kW
- 1x Followspot Robert Juliat Super Korrigan 1,2kW HMI

SMOKE

- 1x Jem zr44 1800W
- 1x MDG ATMe (on stagefloor)

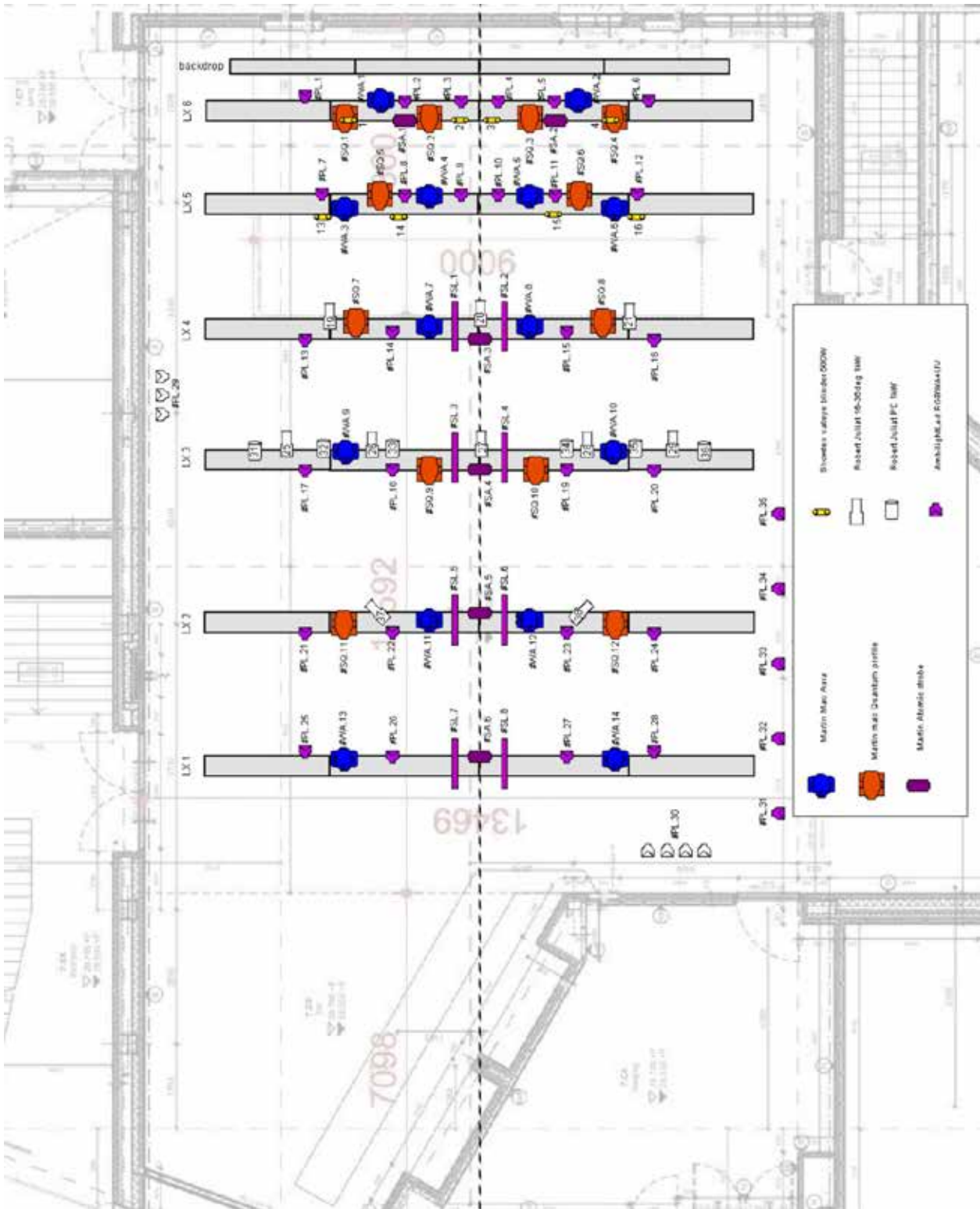
LIGHTPLOT

See page 2

PATCHLIST

See page 3

Pandora Lights – Plot



0006
0092
13469

Pandora

Lights – Patchlist

DMX-PATCH
CONVENTIONAL + LED
Guest-desk: Art-net 1.1
House-desk: Art-Net 0.1

#	Description	Where	Address	Remarks
1	cat eye 1	Lx6 (Stage backtruss)	1	up stage
2	cat eye 2	Lx6 (Stage backtruss)	2	up stage
3	cat eye 3	Lx6 (Stage backtruss)	3	up stage
4	cat eye 4	Lx6 (Stage backtruss)	4	up stage
5			5	
6			6	
7			7	
8			8	
9			9	
10			10	
11			11	
12			12	
13	cat eye 5	Lx5 (Stage midtruss)	13	top stage
14	cat eye 6	Lx5 (Stage midtruss)	14	top stage
15	cat eye 7	Lx5 (Stage midtruss)	15	top stage
16	cat eye 8	Lx5 (Stage midtruss)	16	top stage
17			17	
18			18	
19	Profile 1	Lx4	19	front top
20	Profile 2	Lx4	20	front top
21	Profile 3	Lx4	21	front top
22		Lx4	22	front top
23	cat eye 1	Lx4	23	front top
24	cat eye 2	Lx4	24	front top
25	Profile 4	Lx3	25	front
26	Profile 5	Lx3	26	front
27	Profile 6	Lx3	27	front
28	Profile 7	Lx3	28	front
29	Profile 8	Lx3	29	front
30		Lx3	30	front
31	Pc 1	Lx3	31	front
32	Pc 2	Lx3	32	front
33	Pc 3	Lx3	33	front
34	Pc 4	Lx3	34	front
35	Pc 5	Lx3	35	front
36	Pc 6	Lx3	36	front
37	Profile 9	Lx2	37	hall
38	Profile 10	Lx2	38	hall
39			39	
40			40	
41			41	
42			42	
43			43	
44			44	
45			45	
46			46	
47			47	
48			48	
	Free channels:		49-512	

**DMX-PATCH
SPOTS & STROBES
Guest-desk: Art-net 1.2
House-desk: Art-Net 0.2**

Type	#	Description	Where	Address	Remarks
#SQ.	1	Martin Quantum spot	LX6	1	basic mode
#SQ.	2	Martin Quantum spot	LX6	20	basic mode
#SQ.	3	Martin Quantum spot	LX6	39	basic mode
#SQ.	4	Martin Quantum spot	LX6	58	basic mode
#SQ.	5	Martin Quantum spot	LX5	77	basic mode
#SQ.	6	Martin Quantum spot	LX5	96	basic mode
#SQ.	7	Martin Quantum spot	LX4	115	basic mode
#SQ.	8	Martin Quantum spot	LX4	134	basic mode
#SQ.	9	Martin Quantum spot	LX3	153	basic mode
#SQ.	10	Martin Quantum spot	LX3	172	basic mode
#SQ.	11	Martin Quantum spot	LX2	191	basic mode
#SQ.	12	Martin Quantum spot	LX2	210	basic mode
#SQ.	13	Martin Quantum spot	Stagefloor	229	basic mode
#SQ.	14	Martin Quantum spot	Stagefloor	248	basic mode
#SQ.	15	Martin Quantum spot	Stagefloor	267	basic mode
#SQ.	16	Martin Quantum spot	Stagefloor	286	basic mode
		free channels:		305-468	
#SA.	1	Martin Atomic	LX6	469	4chan
#SA.	2	Martin Atomic	LX6	473	4chan
#SA.	3	Martin Atomic	Lx4	477	4chan
#SA.	4	Martin Atomic	Lx3	481	4chan
#SA.	5	Martin Atomic	Lx2	485	4chan
#SA.	6	Martin Atomic	Lx1	489	4chan
		floor dimmer 12ch		493	12CHan
	801	MDG ATMe		509	3ch, unit off/on(>50%), haze(0%->100%), haze off/on(>50%)
	802	Jem zr44		512	1 channel, smoke

**DMX-PATCH
WASH
Guest-desk: Art-net 1.3
House-desk: Art-Net 0.3**

Type	#	Description	Where	Adress	FX	Remarks
#WA.	1	Martin Mac Aura	LX6	1	15	Ext, hog4 req 2 personality's: aura fx +mac aura
#WA.	2	Martin Mac Aura	LX6	26	40	Ext, hog4 req 2 personality's: aura fx +mac aura
#WA.	3	Martin Mac Aura	LX5	51	65	Ext, hog4 req 2 personality's: aura fx +mac aura
#WA.	4	Martin Mac Aura	LX5	76	90	Ext, hog4 req 2 personality's: aura fx +mac aura
#WA.	5	Martin Mac Aura	LX5	101	115	Ext, hog4 req 2 personality's: aura fx +mac aura
#WA.	6	Martin Mac Aura	LX5	126	140	Ext, hog4 req 2 personality's: aura fx +mac aura
#WA.	7	Martin Mac Aura	LX4	151	165	Ext, hog4 req 2 personality's: aura fx +mac aura
#WA.	8	Martin Mac Aura	LX4	176	190	Ext, hog4 req 2 personality's: aura fx +mac aura
#WA.	9	Martin Mac Aura	LX3	201	215	Ext, hog4 req 2 personality's: aura fx +mac aura
#WA.	10	Martin Mac Aura	LX3	226	240	Ext, hog4 req 2 personality's: aura fx +mac aura
#WA.	11	Martin Mac Aura	LX2	251	265	Ext, hog4 req 2 personality's: aura fx +mac aura
#WA.	12	Martin Mac Aura	LX2	276	290	Ext, hog4 req 2 personality's: aura fx +mac aura
#WA.	13	Martin Mac Aura	LX1	301	315	Ext, hog4 req 2 personality's: aura fx +mac aura
#WA.	14	Martin Mac Aura	LX1	326	340	Ext, hog4 req 2 personality's: aura fx +mac aura
#WA.	15	Martin Mac Aura	Stagefloor	351	365	Ext, hog4 req 2 personality's: aura fx +mac aura
#WA.	16	Martin Mac Aura	Stagefloor	376	390	Ext, hog4 req 2 personality's: aura fx +mac aura
#WA.	17	Martin Mac Aura	Stagefloor	401	415	Ext, hog4 req 2 personality's: aura fx +mac aura
#WA.	18	Martin Mac Aura	Stagefloor	426	440	Ext, hog4 req 2 personality's: aura fx +mac aura
#PL.	29	cls warm white (2ch, DS)	balcony left	451		when balcony in use must be on all times
#PL.	30	cls warm white (2ch, DS)	balcony back	453		when balcony in use must be on all times
#PL.	31	CLS RGBAWUV LED Par	Side Stage	455		8channels: dim+rgbawp+strobe
#PL.	32	CLS RGBAWUV LED Par	Side Stage	463		8channels: dim+rgbawp+strobe
#PL.	33	CLS RGBAWUV LED Par	Side Stage	471		8channels: dim+rgbawp+strobe
#PL.	34	CLS RGBAWUV LED Par	Side Stage	479		8channels: dim+rgbawp+strobe
#PL.	35	CLS RGBAWUV LED Par	Side Stage	487		8channels: dim+rgbawp+strobe
		Free channels:		495-512		

**DMX-PATCH
LEDSTRIPS**
Guest-desk: Art-net 1.4
House-desk: Art-Net 0.4

Type	#	Description	Where	Address	Remarks
#SL.	1	ClS pixelbar tri colore rgb	LX4	1	Independent mode
#SL.	2	ClS pixelbar tri colore rgb	LX4	37	Independent mode
#SL.	3	ClS pixelbar tri colore rgb	LX3	73	Independent mode
#SL.	4	ClS pixelbar tri colore rgb	LX3	109	Independent mode
#SL.	5	ClS pixelbar tri colore rgb	LX2	145	Independent mode
#SL.	6	ClS pixelbar tri colore rgb	LX2	181	Independent mode
#SL.	7	ClS pixelbar tri colore rgb	LX1	217	Independent mode
#SL.	8	ClS pixelbar tri colore rgb	LX1	253	Independent mode
#PL.	1	CLS RGBAWUV LED Par	Lx6 (Stage backtruss)	289	8channels: dim+rgbawp+strobe
#PL.	2	CLS RGBAWUV LED Par	Lx6 (Stage backtruss)	297	8channels: dim+rgbawp+strobe
#PL.	3	CLS RGBAWUV LED Par	Lx6 (Stage backtruss)	305	8channels: dim+rgbawp+strobe
#PL.	4	CLS RGBAWUV LED Par	Lx6 (Stage backtruss)	313	8channels: dim+rgbawp+strobe
#PL.	5	CLS RGBAWUV LED Par	Lx6 (Stage backtruss)	321	8channels: dim+rgbawp+strobe
#PL.	6	CLS RGBAWUV LED Par	Lx6 (Stage backtruss)	329	8channels: dim+rgbawp+strobe
#PL.	7	CLS RGBAWUV LED Par	Lx5 (Stage midtruss)	337	8channels: dim+rgbawp+strobe
#PL.	8	CLS RGBAWUV LED Par	Lx5 (Stage midtruss)	345	8channels: dim+rgbawp+strobe
#PL.	9	CLS RGBAWUV LED Par	Lx5 (Stage midtruss)	353	8channels: dim+rgbawp+strobe
#PL.	10	CLS RGBAWUV LED Par	Lx5 (Stage midtruss)	361	8channels: dim+rgbawp+strobe
#PL.	11	CLS RGBAWUV LED Par	Lx5 (Stage midtruss)	369	8channels: dim+rgbawp+strobe
#PL.	12	CLS RGBAWUV LED Par	Lx5 (Stage midtruss)	377	8channels: dim+rgbawp+strobe
#PL.	13	CLS RGBAWUV LED Par	Lx4	385	8channels: dim+rgbawp+strobe
#PL.	14	CLS RGBAWUV LED Par	Lx4	393	8channels: dim+rgbawp+strobe
#PL.	15	CLS RGBAWUV LED Par	Lx4	401	8channels: dim+rgbawp+strobe
#PL.	16	CLS RGBAWUV LED Par	Lx4	409	8channels: dim+rgbawp+strobe
#PL.	17	CLS RGBAWUV LED Par	Lx3	417	8channels: dim+rgbawp+strobe
#PL.	18	CLS RGBAWUV LED Par	Lx3	425	8channels: dim+rgbawp+strobe
#PL.	19	CLS RGBAWUV LED Par	Lx3	433	8channels: dim+rgbawp+strobe
#PL.	20	CLS RGBAWUV LED Par	Lx3	441	8channels: dim+rgbawp+strobe
#PL.	21	CLS RGBAWUV LED Par	Lx2	449	8channels: dim+rgbawp+strobe
#PL.	22	CLS RGBAWUV LED Par	Lx2	457	8channels: dim+rgbawp+strobe
#PL.	23	CLS RGBAWUV LED Par	Lx2	465	8channels: dim+rgbawp+strobe
#PL.	24	CLS RGBAWUV LED Par	Lx2	473	8channels: dim+rgbawp+strobe
#PL.	25	CLS RGBAWUV LED Par	Lx1	481	8channels: dim+rgbawp+strobe
#PL.	26	CLS RGBAWUV LED Par	Lx1	489	8channels: dim+rgbawp+strobe
#PL.	27	CLS RGBAWUV LED Par	Lx1	497	8channels: dim+rgbawp+strobe
#PL.	28	CLS RGBAWUV LED Par	Lx1	505	8channels: dim+rgbawp+strobe
		Free channels:		N.A.	

**DMX-PATCH
FREE ON NODE DMX PATCH**
Guest-desk: Art-net 1.5
House-desk: Art-Net 0.5

#	Description	Where	Address	Remarks

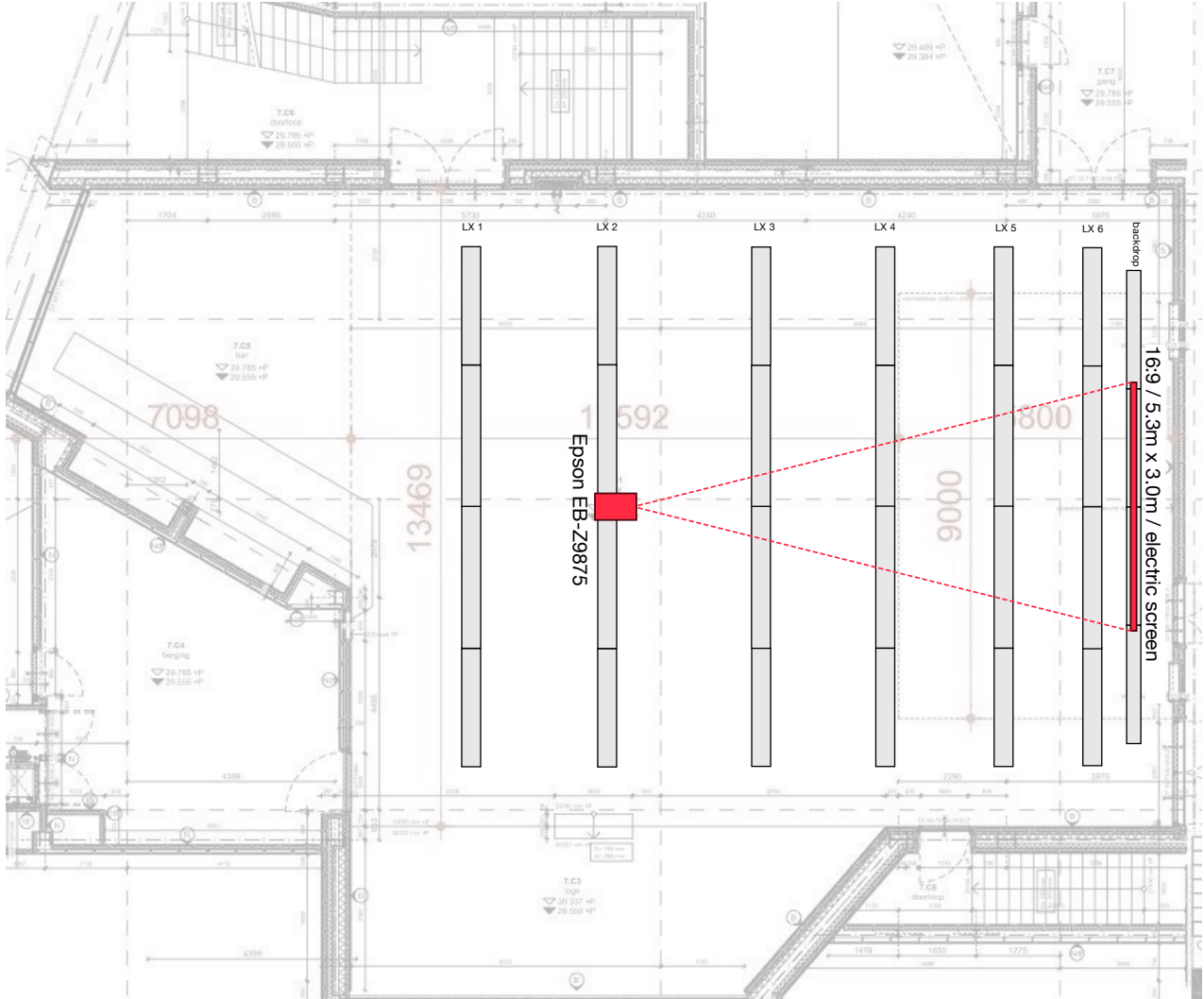
IP-ADRESSES LIGHTNETWORK

Location	Housedesk	Guestdesk	Cuecore	Nodes	Remotes
Grote zaal	2.1.0.1	2.1.0.2		2.1.1.1	2.1.2.1-100
Ronda	2.2.0.1	2.2.0.2	2.2.0.10	2.2.1.1 2.2.1.2	2.2.2.1-100
Pandora	2.3.0.1	2.3.0.2		2.3.1.1	2.3.2.1-100
Hertz	2.4.0.1	2.4.0.2	2.4.0.10	2.4.1.1	2.4.2.1-100
Cloud9	2.5.0.1	2.5.0.2		2.5.1.1	2.5.2.1-100
workshop	2.6.0.1	2.6.0.2		2.6.1.1	2.6.2.1-100
Foyers	2.7.0.1		2.7.0.10	2.7.1.1 2.7.1.2 2.7.1.3 2.7.1.4	
Roof			2.8.0.10		
Rabo open stage			2.9.0.10		
Input node				2.10.1.1	
Output node				2.11.1.1	
House laptop	2.100.0.1				

Pandora Video

<p>PROJECTOR 1x Epson EB-Z9875 WUXGA 1920x1080 / 8,7k lumen / 16:9 <i>fixed in LX2</i> 1x Epson-lens ELPLS04 1.65-2.51:1</p> <p>PROJECTIONSCREEN 1x Projecta electric screen 5,3m x 3,0m / 16:9 <i>fixed in backdrotruss</i></p> <p>SCALING 2x Avitech Pacific C-A Scaler</p> <p>NETWORK 1x Lightware MX-FR9 9x9 Matrix <i>fixed in technical room</i> <i>All video-infrastructure is HD-BaseT</i></p> <p>NETWORK LINES <i>All lines are patchable as in- or output at the matrix</i> 3x Stage Right 2x Stage Left 2x F.O.H. 3x Grid <i>(1x in use by projector)</i></p>	<p>POSSIBLE INPUTS <i>The following video protocols are supported by the Avitech Pacific scaler:</i></p> <table> <thead> <tr> <th><i>Protocol:</i></th> <th><i>Connector:</i></th> </tr> </thead> <tbody> <tr> <td>VGA</td> <td>DE15</td> </tr> <tr> <td>HDMI</td> <td>TypeA</td> </tr> <tr> <td>DVI</td> <td>DVI-A / DVI-I / DVI-D</td> </tr> <tr> <td>Composite</td> <td>BNC / Cinch</td> </tr> <tr> <td>DP (Apple)</td> <td>Mini-Display-port</td> </tr> <tr> <td>SDI</td> <td>BNC</td> </tr> <tr> <td>HD-SDI</td> <td>BNC</td> </tr> </tbody> </table>	<i>Protocol:</i>	<i>Connector:</i>	VGA	DE15	HDMI	TypeA	DVI	DVI-A / DVI-I / DVI-D	Composite	BNC / Cinch	DP (Apple)	Mini-Display-port	SDI	BNC	HD-SDI	BNC
<i>Protocol:</i>	<i>Connector:</i>																
VGA	DE15																
HDMI	TypeA																
DVI	DVI-A / DVI-I / DVI-D																
Composite	BNC / Cinch																
DP (Apple)	Mini-Display-port																
SDI	BNC																
HD-SDI	BNC																

Pandora Video – Plot (Top)



Pandora Video – Plot (Side)

