

# GROTE ZAAL

AUDIO / LICHT / VIDEO

## Big Hall Audio

### FOH

1 Soundcraft Vi-6 64 DSP kan stagebox cat5 48 in 24out 8 AES

- LocalRack
  - 16 Line-Inputs
  - 16 Line-Outputs
  - 3 Mic-Inputs
  - 8 AES-Inputs
  - 8 AES-Outputs
- StageRack
  - 48 Inputs
  - 16 Outputs
  - 8 AES-Outputs

1 Passieve Split 48 ch

- 48 In/Outputs - XLR and LK37
- LK150 -> FOH Rack
- LK150 -> MON Rack
- 4x Socapex for broadcast

1 Denon - DN-500R SD/USB Recorder

### CONTROL

d&b audiotechnik R1 Software

### PA

40x d&b audiotechnik T-10

4x d&b audiotechnik T-Sub

3x d&b audiotechnik D80 amps

Main PA:

1x T-Sub flown per side

8x T-10 top flown per side

Side PA:

1x T-Sub flown per side

8x T-10 top flown per side

Back Fills:

4x T-10 top flown per side

Ground Stack:

4x V-12 per side

2x V-Sub per side

1x Q7 per side

1x J-infra sub per side

Front Fill:

4x E6 Speaker

Speakers amplified by d&b audiotechnik D80 Amplifier

# Grote Zaal

## Lights

### DESK

1x Highend Hog4 Roadhog (software v3.1.0 (b1078))  
1x roadhog3 playbackwing

Nb.: All lights are controlled by Art-Net, see patchlist for details!

### DIMMERS

120 Beo dimmerchannel 3,6kW on CEE32 1p in grid  
48x dimmerchannel 2,3kw in mobile rack on stagefloor

### STAGE - CONVENTIONAL

6x Par64 six-bar 1kw narrow  
4x Par64 ACL-set 2kW  
4x 4-lite 2,3 kW  
10x Par64 floorcan 1kW medium

### STAGE - INTELLIGENT

12x Martin Mac Viper Profile  
10x Highend Studiocolor 575W  
8x Martin Mac Aura  
12x Cls pixelbar tri colore rgb  
4x Martin Atomic strobe

### STAGE - DATA

4x Cat6A stage (2x S.L., 2x S.R.)  
4x Cat6A (2xFOH, 2xRegie)  
6x Dmx in (4xFOH, 2xRegie)  
8x Dmx out (4x S.L., 4x S.R.)

### FRONTLIGHT

12x Robert Juliat 15-40deg 2kW (fixed in catwalk)  
32x Etc Source four 15-30deg 750W  
2x Followspot Robert Juliat Super Korrigan 1,2kW HMI

### SMOKE

1x Highend F-100  
1x Mdg APS

### 'STANDARD' LIGHTPLOT

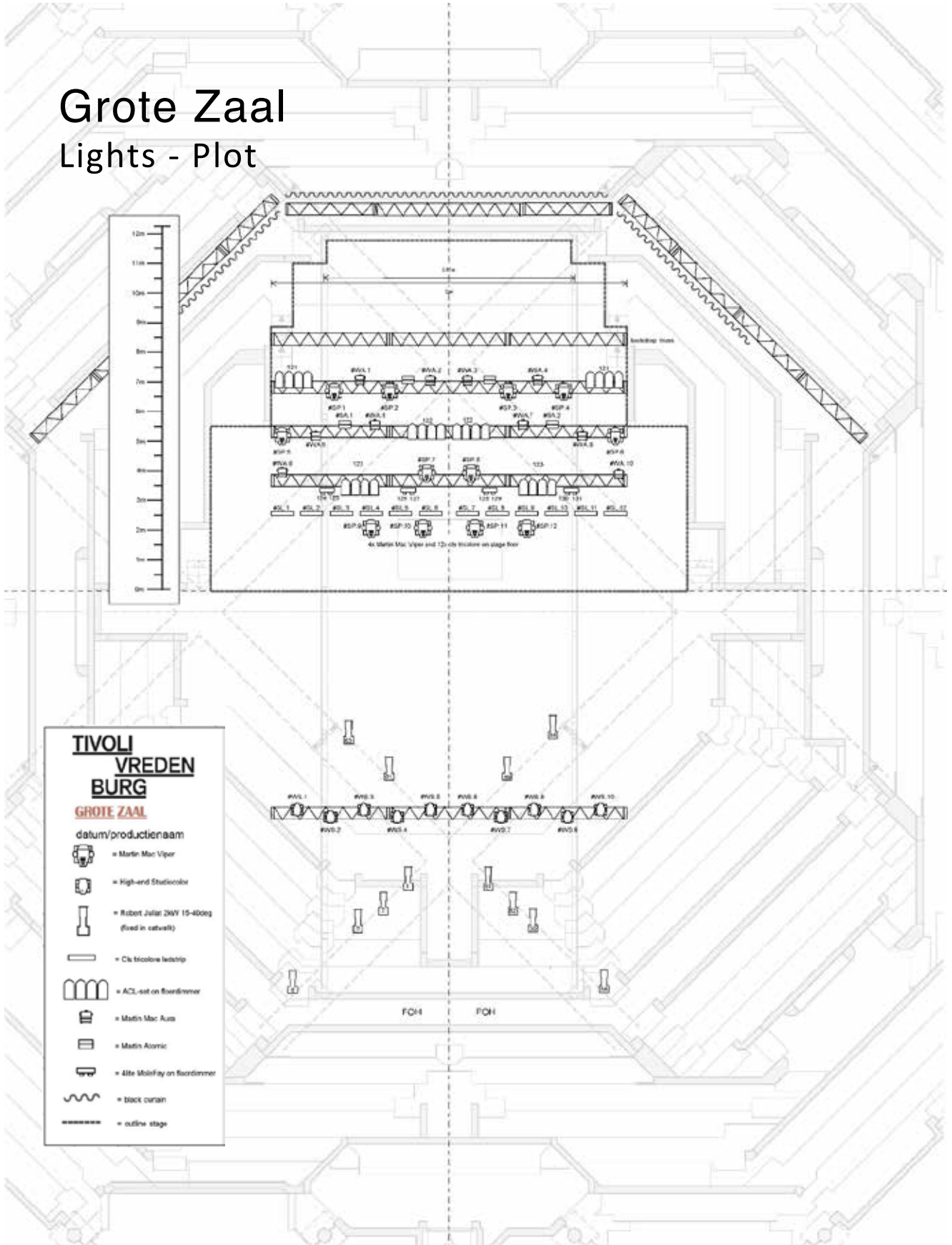
See page 2

### PATCHLIST

See page 3

# Grote Zaal

## Lights - Plot



# Grote Zaal

## Lights – Patchlist

**DMX-PATCH  
CONVENTIONAL**  
Guest-desk: Art-net 1.1  
House-desk: Art-Net 0.1

#	Description	Where	Address		Remarks
1	Dimmers	Grid	1	120	
121	Portable dimmer	Stage left	121	169	
	Free		170	200	
201	Ledpar WarmWhite	Grid	201		1st chan.: dim; 2nd chan: strobe.
202	Ledpar WarmWhite	Grid	203		1st chan.: dim; 2nd chan: strobe.
203	Ledpar WarmWhite	Grid	205		1st chan.: dim; 2nd chan: strobe.
204	Ledpar WarmWhite	Grid	207		1st chan.: dim; 2nd chan: strobe.
205	Ledpar WarmWhite	Grid	209		1st chan.: dim; 2nd chan: strobe.
206	Ledpar WarmWhite	Grid	211		1st chan.: dim; 2nd chan: strobe.
207	Ledpar WarmWhite	Grid	213		1st chan.: dim; 2nd chan: strobe.
208	Ledpar WarmWhite	Grid	215		1st chan.: dim; 2nd chan: strobe.
209	Ledpar WarmWhite	Grid	217		1st chan.: dim; 2nd chan: strobe.
210	Ledpar WarmWhite	Grid	219		1st chan.: dim; 2nd chan: strobe.
211	Ledpar WarmWhite	Grid	221		1st chan.: dim; 2nd chan: strobe.
212	Ledpar WarmWhite	Grid	223		1st chan.: dim; 2nd chan: strobe.
213	Ledpar WarmWhite	Grid	225		1st chan.: dim; 2nd chan: strobe.
214	Ledpar WarmWhite	Grid	227		1st chan.: dim; 2nd chan: strobe.
215	Ledpar WarmWhite	Grid	229		1st chan.: dim; 2nd chan: strobe.
216	Ledpar WarmWhite	Grid	231		1st chan.: dim; 2nd chan: strobe.
217	Ledpar WarmWhite	Grid	233		1st chan.: dim; 2nd chan: strobe.
218	Ledpar WarmWhite	Grid	235		1st chan.: dim; 2nd chan: strobe.
219	Ledpar WarmWhite	Grid	237		1st chan.: dim; 2nd chan: strobe.
220	Ledpar WarmWhite	Grid	239		1st chan.: dim; 2nd chan: strobe.
221	Ledpar WarmWhite	Grid	241		1st chan.: dim; 2nd chan: strobe.
222	Ledpar WarmWhite	Grid	243		1st chan.: dim; 2nd chan: strobe.
223	Ledpar WarmWhite	Grid	245		1st chan.: dim; 2nd chan: strobe.
224	Ledpar WarmWhite	Grid	247		1st chan.: dim; 2nd chan: strobe.
225	Ledpar WarmWhite	Grid	249		1st chan.: dim; 2nd chan: strobe.
226	Ledpar WarmWhite	Grid	251		1st chan.: dim; 2nd chan: strobe.
227	Ledpar WarmWhite	Grid	253		1st chan.: dim; 2nd chan: strobe.
228	Ledpar WarmWhite	Grid	255		1st chan.: dim; 2nd chan: strobe.
229	Ledpar WarmWhite	Grid	257		1st chan.: dim; 2nd chan: strobe.
230	Ledpar WarmWhite	Grid	259		1st chan.: dim; 2nd chan: strobe.
231	Ledpar WarmWhite	Grid	261		1st chan.: dim; 2nd chan: strobe.
232	Ledpar WarmWhite	Grid	263		1st chan.: dim; 2nd chan: strobe.
233	Ledpar WarmWhite	Grid	265		1st chan.: dim; 2nd chan: strobe.
234	Ledpar WarmWhite	Grid	267		1st chan.: dim; 2nd chan: strobe.
235	Ledpar WarmWhite	Grid	269		1st chan.: dim; 2nd chan: strobe.
236	Ledpar WarmWhite	Grid	271		1st chan.: dim; 2nd chan: strobe.
237	Ledpar WarmWhite	Grid	273		1st chan.: dim; 2nd chan: strobe.
238	Ledpar WarmWhite	Grid	275		1st chan.: dim; 2nd chan: strobe.
239	Ledpar WarmWhite	Grid	277		1st chan.: dim; 2nd chan: strobe.
240	Ledpar WarmWhite	Grid	279		1st chan.: dim; 2nd chan: strobe.
241	Ledpar WarmWhite	Grid	281		1st chan.: dim; 2nd chan: strobe.
242	Ledpar WarmWhite	Grid	283		1st chan.: dim; 2nd chan: strobe.
243	Ledpar WarmWhite	Grid	285		1st chan.: dim; 2nd chan: strobe.
244	Ledpar WarmWhite	Grid	287		1st chan.: dim; 2nd chan: strobe.
245	Ledpar WarmWhite	Grid	289		1st chan.: dim; 2nd chan: strobe.
246	Ledpar WarmWhite	Grid	291		1st chan.: dim; 2nd chan: strobe.
247	Ledpar WarmWhite	Grid	293		1st chan.: dim; 2nd chan: strobe.
248	Ledpar WarmWhite	Grid	295		1st chan.: dim; 2nd chan: strobe.
249	Ledpar WarmWhite	Grid	297		1st chan.: dim; 2nd chan: strobe.
250	Ledpar WarmWhite	Grid	299		1st chan.: dim; 2nd chan: strobe.
251	Ledpar WarmWhite	Grid	301		1st chan.: dim; 2nd chan: strobe.
252	Ledpar WarmWhite	Grid	303		1st chan.: dim; 2nd chan: strobe.

253	Ledpar WarmWhite	Grid	305	1st chan.: dim; 2nd chan: strobe.
254	Ledpar WarmWhite	Grid	307	1st chan.: dim; 2nd chan: strobe.
255	Ledpar WarmWhite	Grid	309	1st chan.: dim; 2nd chan: strobe.
256	Ledpar WarmWhite	Grid	311	1st chan.: dim; 2nd chan: strobe.
257	Ledpar WarmWhite	Grid	313	1st chan.: dim; 2nd chan: strobe.
258	Ledpar WarmWhite	Grid	315	1st chan.: dim; 2nd chan: strobe.
259	Ledpar WarmWhite	Grid	317	1st chan.: dim; 2nd chan: strobe.
260	Ledpar WarmWhite	Grid	319	1st chan.: dim; 2nd chan: strobe.
261	Ledpar WarmWhite	Grid	321	1st chan.: dim; 2nd chan: strobe.
262	Ledpar WarmWhite	Grid	323	1st chan.: dim; 2nd chan: strobe.
263	Ledpar WarmWhite	Grid	325	1st chan.: dim; 2nd chan: strobe.
264	Ledpar WarmWhite	Grid	327	1st chan.: dim; 2nd chan: strobe.
265	Ledpar WarmWhite	Grid	329	1st chan.: dim; 2nd chan: strobe.
266	Ledpar WarmWhite	Grid	331	1st chan.: dim; 2nd chan: strobe.
267	Ledpar WarmWhite	Grid	333	1st chan.: dim; 2nd chan: strobe.
268	Ledpar WarmWhite	Grid	335	1st chan.: dim; 2nd chan: strobe.
269	Ledpar WarmWhite	Grid	337	1st chan.: dim; 2nd chan: strobe.
270	Ledpar WarmWhite	Grid	339	1st chan.: dim; 2nd chan: strobe.
271	Ledpar WarmWhite	Grid	341	1st chan.: dim; 2nd chan: strobe.
272	Ledpar WarmWhite	Grid	343	1st chan.: dim; 2nd chan: strobe.
273	Ledpar WarmWhite	Grid	345	1st chan.: dim; 2nd chan: strobe.
274	Ledpar WarmWhite	Grid	347	1st chan.: dim; 2nd chan: strobe.
275	Ledpar WarmWhite	Grid	349	1st chan.: dim; 2nd chan: strobe.
276	Ledpar WarmWhite	Grid	351	1st chan.: dim; 2nd chan: strobe.
277	Ledpar WarmWhite	Grid	353	1st chan.: dim; 2nd chan: strobe.
278	Ledpar WarmWhite	Grid	355	1st chan.: dim; 2nd chan: strobe.
279	Ledpar WarmWhite	Grid	357	1st chan.: dim; 2nd chan: strobe.
280	Ledpar WarmWhite	Grid	359	1st chan.: dim; 2nd chan: strobe.
281	Ledpar WarmWhite	Grid	361	1st chan.: dim; 2nd chan: strobe.
282	Ledpar WarmWhite	Grid	363	1st chan.: dim; 2nd chan: strobe.
283	Ledpar WarmWhite	Grid	365	1st chan.: dim; 2nd chan: strobe.
284	Ledpar WarmWhite	Grid	367	1st chan.: dim; 2nd chan: strobe.
285	Ledpar WarmWhite	Grid	369	1st chan.: dim; 2nd chan: strobe.
286	Ledpar WarmWhite	Grid	371	1st chan.: dim; 2nd chan: strobe.
287	Ledpar WarmWhite	Grid	373	1st chan.: dim; 2nd chan: strobe.
288	Ledpar WarmWhite	Grid	375	1st chan.: dim; 2nd chan: strobe.
289	Ledpar WarmWhite	Grid	377	1st chan.: dim; 2nd chan: strobe.
290	Ledpar WarmWhite	Grid	379	1st chan.: dim; 2nd chan: strobe.
291	Ledpar WarmWhite	Grid	381	1st chan.: dim; 2nd chan: strobe.
292	Ledpar WarmWhite	Grid	383	1st chan.: dim; 2nd chan: strobe.
293	Ledpar WarmWhite	Grid	385	1st chan.: dim; 2nd chan: strobe.
294	Ledpar WarmWhite	Grid	387	1st chan.: dim; 2nd chan: strobe.
295	Ledpar WarmWhite	Grid	389	1st chan.: dim; 2nd chan: strobe.
296	Ledpar WarmWhite	Grid	391	1st chan.: dim; 2nd chan: strobe.
1000	Led houselights relay	Roof	400	
1001	Led houselights	Roof	401-450	
1101	Uplighters ceiling	Roof	509	
1102	Fluorescence ceiling	Roof	510	
1103	Fluorescence entry's		511	
1104	Pillars		512	

**DMX-PATCH  
INTELLIGENT  
Guest-desk: Art-net 1.2  
House-desk: Art-Net 0.2**

Type	Nr.	Description	Where	Address	Remarks
#SV.	1	Martin Mac Viper	Truss	1	Basic
#SV.	2	Martin Mac Viper	Truss	27	Basic
#SV.	3	Martin Mac Viper	Truss	53	Basic
#SV.	4	Martin Mac Viper	Truss	79	Basic
#SV.	5	Martin Mac Viper	Truss	105	Basic
#SV.	6	Martin Mac Viper	Truss	131	Basic
#SV.	7	Martin Mac Viper	Truss	157	Basic
#SV.	8	Martin Mac Viper	Truss	183	Basic
#SV.	9	Martin Mac Viper	Truss	209	Basic
#SV.	10	Martin Mac Viper	Truss	235	Basic
#SV.	11	Martin Mac Viper	Truss	261	Basic
#SV.	12	Martin Mac Viper	Truss	287	Basic
#SA.	1	Martin Atomic strobe	Truss	313	4channel mode
#SA.	2	Martin Atomic strobe	Truss	317	4channel mode
#SA.	3	Martin Atomic strobe	Truss	321	4channel mode
#SA.	4	Martin Atomic strobe	Truss	325	4channel mode

**DMX-PATCH  
AURA'S & LEDBARS  
Guest-desk: Art-net 1.3  
House-desk: Art-Net 0.3**

Type	Nr.	Description	Where	Address	FX	Remarks
#WS.	1	High End Studiocolor 575	Truss	1		
#WS.	2	High End Studiocolor 575	Truss	17		
#WS.	3	High End Studiocolor 575	Truss	33		
#WS.	4	High End Studiocolor 575	Truss	49		
#WS.	5	High End Studiocolor 575	Truss	65		
#WS.	6	High End Studiocolor 575	Truss	81		
#WS.	7	High End Studiocolor 575	Truss	97		
#WS.	8	High End Studiocolor 575	Truss	113		
#WS.	9	High End Studiocolor 575	Truss	129		
#WS.	10	High End Studiocolor 575	Truss	145		
#WA.	1	Mac Aura	Truss	161	175	Extended, hog4 needs 2 personality's: aura fx +mac aura
#WA.	2	Mac Aura	Truss	186	200	Extended, hog4 needs 2 personality's: aura fx +mac aura
#WA.	3	Mac Aura	Truss	211	225	Extended, hog4 needs 2 personality's: aura fx +mac aura
#WA.	4	Mac Aura	Truss	236	250	Extended, hog4 needs 2 personality's: aura fx +mac aura
#WA.	5	Mac Aura	Truss	261	275	Extended, hog4 needs 2 personality's: aura fx +mac aura
#WA.	6	Mac Aura	Truss	286	300	Extended, hog4 needs 2 personality's: aura fx +mac aura
#WA.	7	Mac Aura	Truss	311	325	Extended, hog4 needs 2 personality's: aura fx +mac aura
#WA.	8	Mac Aura	Truss	336	350	Extended, hog4 needs 2 personality's: aura fx +mac aura
#WA.	9	Mac Aura	Truss	361	375	Extended, hog4 needs 2 personality's: aura fx +mac aura
#WA.	10	Mac Aura	Truss	386	400	Extended, hog4 needs 2 personality's: aura fx +mac aura
#SL.	1	Cls pixelbar tricolore	stagefloor	411		synchronize mode, 3 channel RGB for complete bar
#SL.	2	Cls pixelbar tricolore	stagefloor	414		synchronize mode, 3 channel RGB for complete bar
#SL.	3	Cls pixelbar tricolore	stagefloor	417		synchronize mode, 3 channel RGB for complete bar
#SL.	4	Cls pixelbar tricolore	stagefloor	420		synchronize mode, 3 channel RGB for complete bar
#SL.	5	Cls pixelbar tricolore	stagefloor	423		synchronize mode, 3 channel RGB for complete bar
#SL.	6	Cls pixelbar tricolore	stagefloor	426		synchronize mode, 3 channel RGB for complete bar
#SL.	7	Cls pixelbar tricolore	stagefloor	429		synchronize mode, 3 channel RGB for complete bar
#SL.	8	Cls pixelbar tricolore	stagefloor	432		synchronize mode, 3 channel RGB for complete bar
#SL.	9	Cls pixelbar tricolore	stagefloor	435		synchronize mode, 3 channel RGB for complete bar
#SL.	10	Cls pixelbar tricolore	stagefloor	438		synchronize mode, 3 channel RGB for complete bar
#SL.	11	Cls pixelbar tricolore	stagefloor	441		synchronize mode, 3 channel RGB for complete bar
#SL.	12	Cls pixelbar tricolore	stagefloor	444		synchronize mode, 3 channel RGB for complete bar

**DMX-PATCH  
FREE ON NODE DMX-PATCH  
Guest-desk: Art-net 1.4  
House-desk: Art-Net 0.4**

#	Description	Where	Address	FX	Remarks

**IP-ADRESSES LIGHTNETWORK**

Location	Housedesk	Guestdesk	Cuecore	Nodes	Remotes
Grote zaal	2.1.0.1	2.1.0.2		2.1.1.1	2.1.2.1-100
Ronda	2.2.0.1	2.2.0.2	2.2.0.10	2.2.1.1 2.2.1.2	2.2.2.1-100
Pandora	2.3.0.1	2.3.0.2		2.3.1.1	2.3.2.1-100
Hertz	2.4.0.1	2.4.0.2	2.4.0.10	2.4.1.1	2.4.2.1-100
Cloud9	2.5.0.1	2.5.0.2		2.5.1.1	2.5.2.1-100
workshop	2.6.0.1	2.6.0.2		2.6.1.1	2.6.2.1-100
Foyers	2.7.0.1		2.7.0.10	2.7.1.1 2.7.1.2 2.7.1.3 2.7.1.4	
Roof			2.8.0.10		
Rabo open stage			2.9.0.10		
Input node				2.10.1.1	
Output node				2.11.1.1	
House laptop	2.100.0.1				

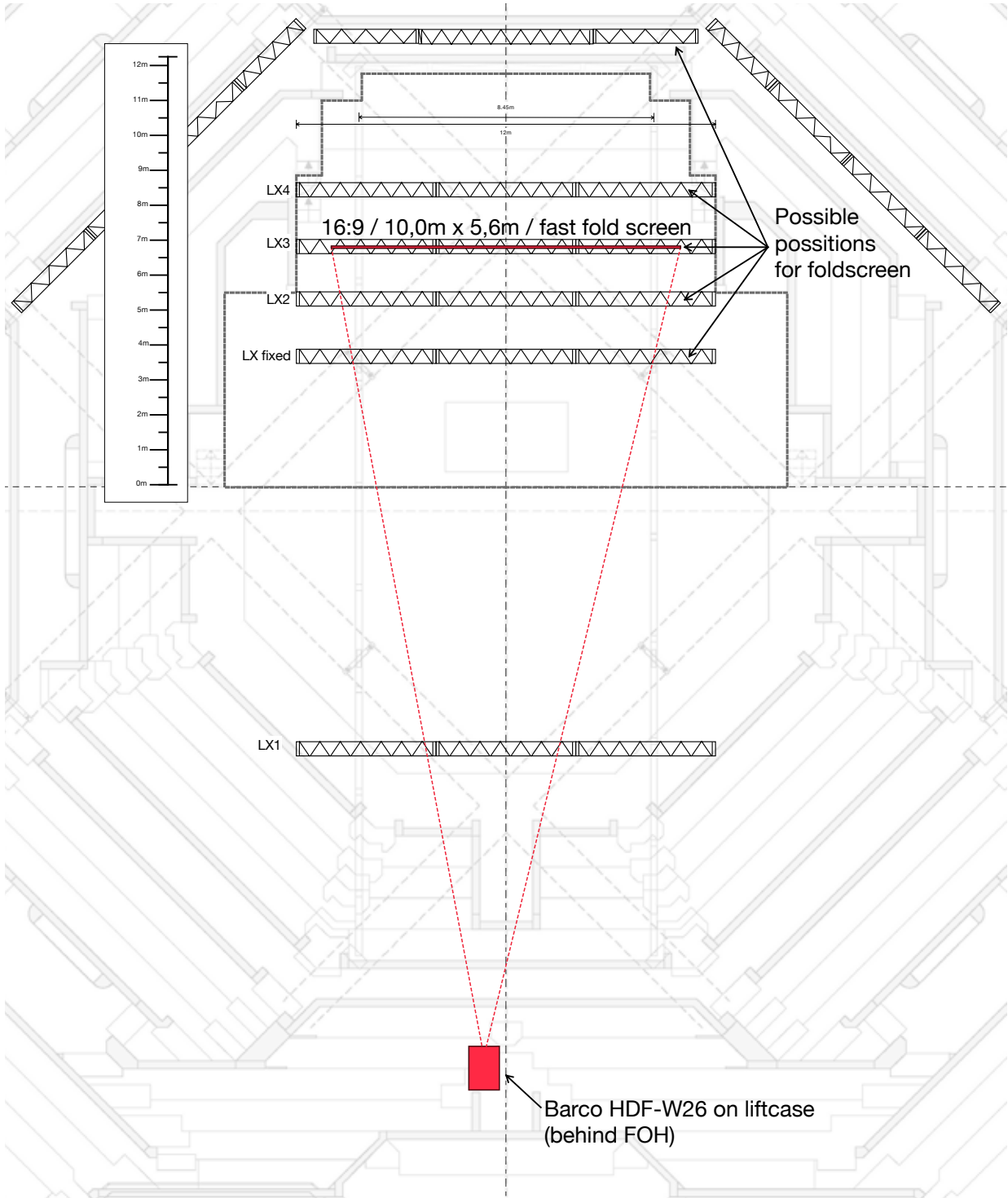
# Grote Zaal

## Video

<p><b>PROJECTOR</b>  1x Barco HDF-W26  1920x1080 / 26k lumen / 16:9  <i>Position on lift-case behind FOH</i></p> <p>1x Barco-lens TLD+ 1.5-2.0:1  (R-9862010)</p> <p>1x Barco-lens TLD+ 2.0-2.8:1  (R-9862020)</p> <p>1x Barco-lens TLD+ 2.8-4.5:1  (R-9862030)</p> <p><b>PROJECTIONSCREEN</b>  1x HD Fastfold screen  10,0m x 5,6m / 16:9  <i>on stage</i></p> <p><b>SCALING</b>  3x Avitech Pacific C-A Scaler</p> <p><b>NETWORK</b>  1x Lightware MX-FR9 9x9 Matrix  <i>fixed in technical room</i>  <i>All video-infrastructure is HD-BaseT</i></p> <p><b>NETWORK LINES</b>  <i>All lines are patchable as in- or output at the matrix</i></p> <p>3x Stage Right  1x Stage Left  3x Control room  5x F.O.H. (1x in use by projector)</p>	<p><b>POSSIBLE INPUTS</b>  <i>The following video protocols are supported by the Avitech Pacific scaler:</i></p> <table> <thead> <tr> <th><i>Protocol:</i></th> <th><i>Connector:</i></th> </tr> </thead> <tbody> <tr> <td>VGA</td> <td>DE15</td> </tr> <tr> <td>HDMI</td> <td>TypeA</td> </tr> <tr> <td>DVI</td> <td>DVI-A / DVI-I / DVI-D</td> </tr> <tr> <td>Composite</td> <td>BNC / Cinch</td> </tr> <tr> <td>DP (Apple)</td> <td>Mini-Display-port</td> </tr> <tr> <td>SDI</td> <td>BNC</td> </tr> <tr> <td>HD-SDI</td> <td>BNC</td> </tr> </tbody> </table>	<i>Protocol:</i>	<i>Connector:</i>	VGA	DE15	HDMI	TypeA	DVI	DVI-A / DVI-I / DVI-D	Composite	BNC / Cinch	DP (Apple)	Mini-Display-port	SDI	BNC	HD-SDI	BNC
<i>Protocol:</i>	<i>Connector:</i>																
VGA	DE15																
HDMI	TypeA																
DVI	DVI-A / DVI-I / DVI-D																
Composite	BNC / Cinch																
DP (Apple)	Mini-Display-port																
SDI	BNC																
HD-SDI	BNC																



# Grote Zaal Video – Plot



Update: 27-8-2015 | Page 2