

CLOUD NINE CLUB / HALL

AUDIO / LICHT / VIDEO

Cloud Nine Club Audio

FOH

1 Allen&Heath GLD80 + GLD AR2412

- Local
 - 4 Mic/Line XLR Inputs
 - 4 Line XLR Outputs
 - 1 AES Output
- Rack
 - 24 Mic/Line XLR Inputs
 - 12 XLR Outputs

CONTROL

PA

4x Renkus Heinz SR81

2x Renkus Heins LR1 Subs

Main PA:

1x Renkus Heinz SR81 flown per side

1x Renkus Heins LR1 Subs per side

Balcony:

1x Renkus Heinz SR81 flown

Bar:

1x Renkus Heinz SR81 flown

Speakers amplified by Crest Audio Amplifiers

MONMIX

from FOH

MON

4x JBL SR700

MIC

3 Sennheiser – E604

1 Sennheiser – E609

4 Shure – SM57

6 Shure – SM58

4 Neumann – KM184

2 Sennheiser – MD421

1 Shure – Beta52

1 Shure – Beta57

DI

4 Bss- AR133

Cloud Nine Audio

FOH

1 Digico - SD9 + Madirack 48/24

- Local
 - 8 Local-inputs
 - 8 Local-outputs
 - 2 Local AES-input
 - 2 Local AES-outputs
- Rack
 - 48 Inputs
 - 24 Outputs

1 Passieve Split 48 ch

- 48 In/Outputs - XLR and LK37
- LK150 -> FOH Rack
- LK150 -> MON Rack
- 4x Socapex for broadcast

1 Denon - DN-500R SD/USB Recorder

PA

12 d&b audiotechnik T10 Loudspeaker NL4

2 d&b audiotechnik T Subwoofer NL4

4 d&b audiotechnik V Subwoofer NL4

2 d&b audiotechnik D80 Amplifier NL4

PA:

4x d&b T-10 Flown per side

1x d&b T-Sub Flown per side

1x d&b V-Sub Flown per side

1x d&b V-Sub Stacked per side (Optional)

Out Fill:

2x T-10 per flown per side

Speakers amplified by d&b audiotechnik D80 Amplifier

CONTROL

1 d&b audiotechnik R1 Software

MONMIX

from FOH

MON

8 d&b audiotechnik M6 Monitor NL4

4 d&b audiotechnik D6 Amplifier NL4

- 8 Monitor Groups

MIC

2 Shure - Beta 56A

2 Sennheiser - E906

6 Shure - SM58-LCE

2 Shure - Beta 58A

1 Shure - Beta 52A

6 Shure - SM57-LCE

2 Shure - Beta 57A

2 Sennheiser - MD421

4 Neumann KM184

1 Beyerdynamic - M 201

1 ATM 250

2 Shure - KSM 137

1 Beyerdynamic - M 88

4 Sennheiser - E 904

2 AKG - C214

DI

4 Radial - ProDI

4 Radial - Pro48

4 Radial - ProD2

1 ASL TR-2 Transformerbox

Cloud Nine - Hall Lights

DESK

1x Highend Hog4 Roadhog (software v3.1.0 (b1078))
1x hog3 faderwing

DIMMERS

24x Ma dimMA channel 2,3kW on CEE1p16A in grid

STAGE - CONVENTIONAL

4x cateye 500W blinder
4x Par64 floorcan 1kW medium
4x Desisti 1kW Fresnel

STAGE - INTELLIGENT

8x Clay Paky Alpha spot HPE 300
8x Martin Mac Aura
6x Cls pixelbar tri colore rgb
10x Cls ledpar RGBAW+UV

FRONTLIGHT

4x Profile 1kW Robert Juliat 614SX 1kW
6x Desisti 1kW Fresnel

STAGE - DATA

4x Cat6A (2xFOH, 2x S.R.)
2x Dmx in S.R.
4x DMx out (2x S.L., 2x S.R.)
2x Dmx in FOH

Houselight (all fixed)

4x Martin Mac Aura
30x Cls ledpar RGBAW+UV

SMOKE

1x Jem compact hazer pro

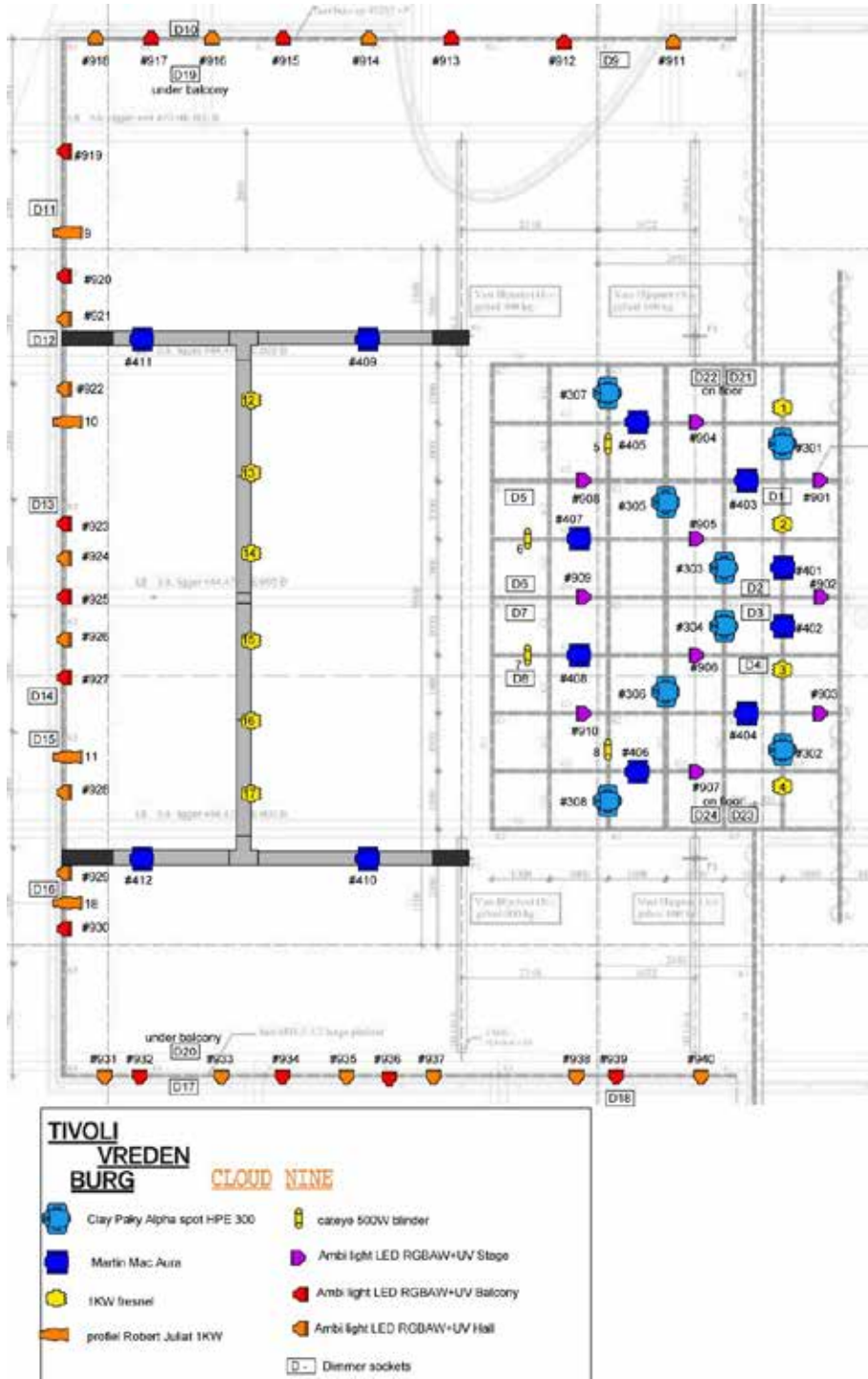
LIGHTPLOT

See page 2

PATCHLIST

See page 3

Cloud Nine - Hall Lights - Plot



Update: 26-6-2015 | Page 2

Cloud Nine - Hall Lights – Patchlist

**DMX-PATCH
CONVENTIONAL + LEDSTRIPS (DMX-LINE 1)**

#	Description	Where	Address	Remarks
1	Dimmers		1-24	24 channels
901	CLS rgbawuv LED Par	Grid stage	25	8channels: dim+rgbawp+strobe
902	CLS rgbawuv LED Par	Grid stage	33	8channels: dim+rgbawp+strobe
903	CLS rgbawuv LED Par	Grid stage	41	8channels: dim+rgbawp+strobe
904	CLS rgbawuv LED Par	Grid stage	49	8channels: dim+rgbawp+strobe
905	CLS rgbawuv LED Par	Grid stage	57	8channels: dim+rgbawp+strobe
906	CLS rgbawuv LED Par	Grid stage	65	8channels: dim+rgbawp+strobe
907	CLS rgbawuv LED Par	Grid stage	73	8channels: dim+rgbawp+strobe
908	CLS rgbawuv LED Par	Grid stage	81	8channels: dim+rgbawp+strobe
909	CLS rgbawuv LED Par	Grid stage	89	8channels: dim+rgbawp+strobe
910	CLS rgbawuv LED Par	Grid stage	97	8channels: dim+rgbawp+strobe
911	CLS rgbawuv LED Par	Hall	105	8channels: dim+rgbawp+strobe
912	CLS rgbawuv LED Par	Balcony	113	8channels: dim+rgbawp+strobe
913	CLS rgbawuv LED Par	Balcony	121	8channels: dim+rgbawp+strobe
914	CLS rgbawuv LED Par	Hall	129	8channels: dim+rgbawp+strobe
915	CLS rgbawuv LED Par	Balcony	137	8channels: dim+rgbawp+strobe
916	CLS rgbawuv LED Par	Hall	145	8channels: dim+rgbawp+strobe
917	CLS rgbawuv LED Par	Balcony	153	8channels: dim+rgbawp+strobe
918	CLS rgbawuv LED Par	Hall	161	8channels: dim+rgbawp+strobe
919	CLS rgbawuv LED Par	Balcony	169	8channels: dim+rgbawp+strobe
920	CLS rgbawuv LED Par	Balcony	177	8channels: dim+rgbawp+strobe
921	CLS rgbawuv LED Par	Hall	185	8channels: dim+rgbawp+strobe
922	CLS rgbawuv LED Par	Hall	193	8channels: dim+rgbawp+strobe
923	CLS rgbawuv LED Par	Balcony	201	8channels: dim+rgbawp+strobe
924	CLS rgbawuv LED Par	Hall	209	8channels: dim+rgbawp+strobe
925	CLS rgbawuv LED Par	Balcony	217	8channels: dim+rgbawp+strobe
926	CLS rgbawuv LED Par	Hall	225	8channels: dim+rgbawp+strobe
927	CLS rgbawuv LED Par	Balcony	233	8channels: dim+rgbawp+strobe
928	CLS rgbawuv LED Par	Hall	241	8channels: dim+rgbawp+strobe
929	CLS rgbawuv LED Par	Hall	249	8channels: dim+rgbawp+strobe
930	CLS rgbawuv LED Par	Balcony	257	8channels: dim+rgbawp+strobe
931	CLS rgbawuv LED Par	Hall	265	8channels: dim+rgbawp+strobe
932	CLS rgbawuv LED Par	Balcony	273	8channels: dim+rgbawp+strobe
933	CLS rgbawuv LED Par	Hall	281	8channels: dim+rgbawp+strobe
934	CLS rgbawuv LED Par	Balcony	289	8channels: dim+rgbawp+strobe
935	CLS rgbawuv LED Par	Hall	297	8channels: dim+rgbawp+strobe
936	CLS rgbawuv LED Par	Balcony	305	8channels: dim+rgbawp+strobe
937	CLS rgbawuv LED Par	Hall	313	8channels: dim+rgbawp+strobe
938	CLS rgbawuv LED Par	Hall	321	8channels: dim+rgbawp+strobe
939	CLS rgbawuv LED Par	Balcony	329	8channels: dim+rgbawp+strobe
940	CLS rgbawuv LED Par	Hall	337	8channels: dim+rgbawp+strobe
501	Cls pixelbar tricolore	Stagefloor	345	synch mode, 3 ch RGB for complete bar
502	Cls pixelbar tricolore	Stagefloor	348	synch mode, 3 ch RGB for complete bar
503	Cls pixelbar tricolore	Stagefloor	351	synch mode, 3 ch RGB for complete bar
504	Cls pixelbar tricolore	Stagefloor	354	synch mode, 3 ch RGB for complete bar
505	Cls pixelbar tricolore	Stagefloor	357	synch mode, 3 ch RGB for complete bar
506	Cls pixelbar tricolore	Stagefloor	360	synch mode, 3 ch RGB for complete bar
	Free		363-512	

Dimmer patch

Description	Dimmer channels
Up stage fresnels	1-2-3-4
Front light	12-13-14-15-16-17
Profile	10-11-18
Catete Blinder	5-6-7-8

Cloud Nine - Hall

Lights – Patchlist (continued)

**DMX-PATCH
INTELLIGENT (DMX-LINE 2)**

#	Description	Where	Address	Aura FX	Remarks
301	Clay Paky HPE 300	Grid stage	1		Standard
302	Clay Paky HPE 300	Grid stage	24		Standard
303	Clay Paky HPE 300	Grid stage	47		Standard
304	Clay Paky HPE 300	Grid stage	70		Standard
305	Clay Paky HPE 300	Grid stage	93		Standard
306	Clay Paky HPE 300	Grid stage	116		Standard
307	Clay Paky HPE 300	Grid stage	139		Standard
308	Clay Paky HPE 300	Grid stage	162		Standard
	Free		185-200		
401	Mac Aura	Grid stage	201	215	Ext., hog4 needs 2 personality's: aura fx +mac aura
402	Mac Aura	Grid stage	226	240	Ext., hog4 needs 2 personality's: aura fx +mac aura
403	Mac Aura	Grid stage	251	265	Ext., hog4 needs 2 personality's: aura fx +mac aura
404	Mac Aura	Grid stage	276	290	Ext., hog4 needs 2 personality's: aura fx +mac aura
405	Mac Aura	Grid stage	301	315	Ext., hog4 needs 2 personality's: aura fx +mac aura
406	Mac Aura	Grid stage	326	340	Ext., hog4 needs 2 personality's: aura fx +mac aura
407	Mac Aura	Grid stage	351	365	Ext., hog4 needs 2 personality's: aura fx +mac aura
408	Mac Aura	Grid stage	376	390	Ext., hog4 needs 2 personality's: aura fx +mac aura
409	Mac Aura	Grid House	401	415	Ext., hog4 needs 2 personality's: aura fx +mac aura
410	Mac Aura	Grid House	426	440	Ext., hog4 needs 2 personality's: aura fx +mac aura
411	Mac Aura	Grid House	451	465	Ext., hog4 needs 2 personality's: aura fx +mac aura
412	Mac Aura	Grid House	476	490	Ext., hog4 needs 2 personality's: aura fx +mac aura
	Free		501-510		
801	Compact hazer	Stage	510		3ch haze/fan/control

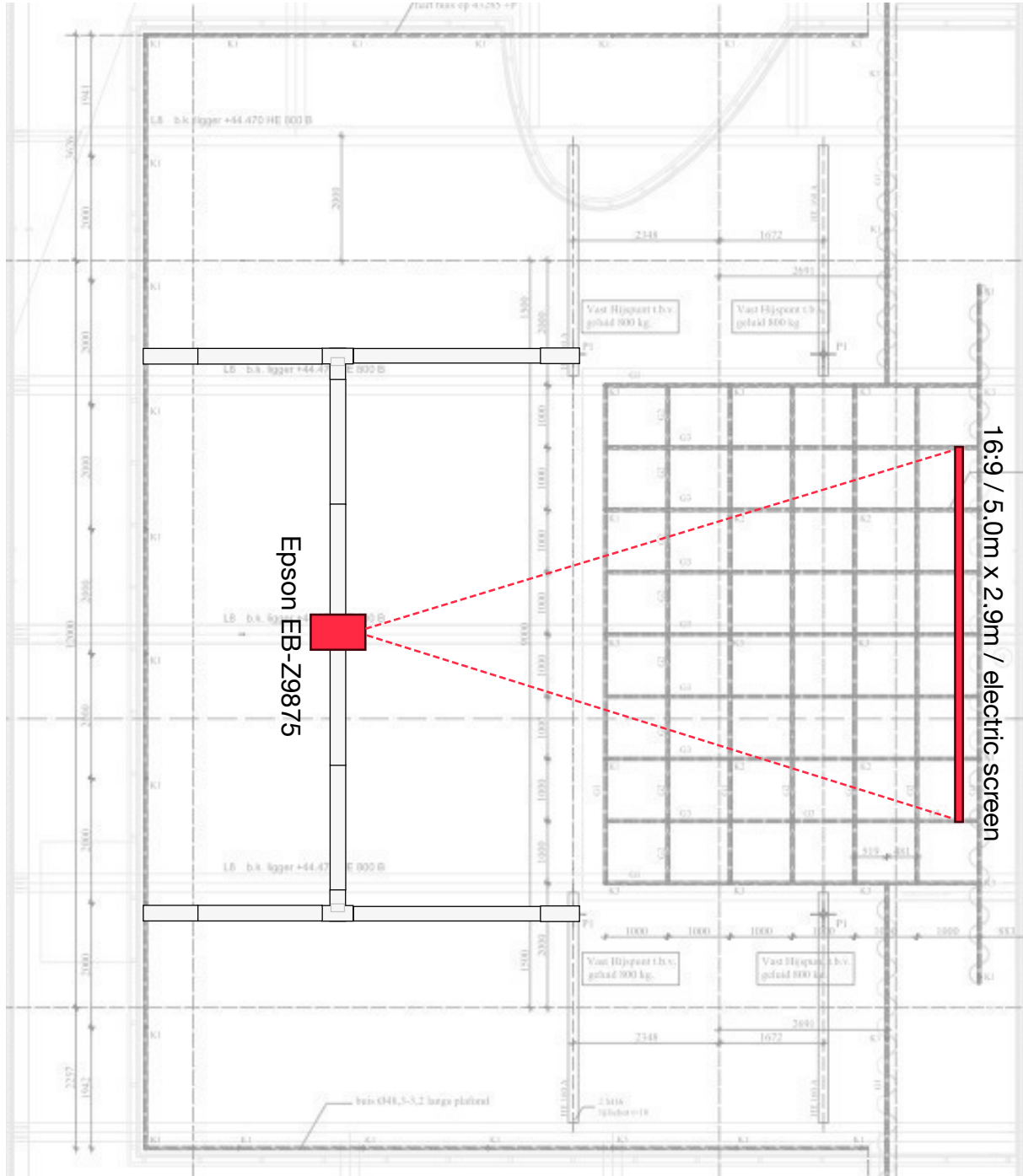
IP-ADRESSES LIGHTNETWORK

Location	Housedesk	Guestdesk	Cuecore	Nodes	Remotes
Grote zaal	2.1.0.1	2.1.0.2		2.1.1.1	2.1.2.1-100
Ronda	2.2.0.1	2.2.0.2	2.2.0.10	2.2.1.1 2.2.1.2	2.2.2.1-100
Pandora	2.3.0.1	2.3.0.2		2.3.1.1	2.3.2.1-100
Hertz	2.4.0.1	2.4.0.2	2.4.0.10	2.4.1.1	2.4.2.1-100
Cloud9	2.5.0.1	2.5.0.2		2.5.1.1	2.5.2.1-100
workshop	2.6.0.1	2.6.0.2		2.6.1.1	2.6.2.1-100
Foyers	2.7.0.1		2.7.0.10	2.7.1.1 2.7.1.2 2.7.1.3 2.7.1.4	
Roof			2.8.0.10		
Rabo open stage			2.9.0.10		
Input node				2.10.1.1	
Output node				2.11.1.1	
House laptop	2.100.0.1				

Cloud Nine Video

<p>PROJECTOR 1x Epson EB-Z9875 WUXGA 1920x1080 / 8,7k lumen / 16:9 <i>fixed in frontruss</i> 1x Epson-lens ELPLS04 1.65-2.51:1</p> <p>PROJECTIONSCREEN 1x Projecta electric screen 5,0m x 2,9m / 16:9 <i>fixed in grid, up-stage</i></p> <p>SCALING 2x Avitech Pacific C-A Scaler</p> <p>NETWORK 1x Lightware MX-FR9 9x9 Matrix <i>fixed in technical room</i> <i>All video-infrastructure is HD-BaseT</i></p> <p>NETWORK LINES <i>All lines are patchable as in- or output at the matrix</i> 3x Stage Right 3x F.O.H. 3x Grid <i>(1x in use by projector)</i></p>	<p>POSSIBLE INPUTS <i>The following video protocols are supported by the Avitech Pacific scaler:</i></p> <table border="0"> <tr> <td><i>Protocol:</i></td> <td><i>Connector:</i></td> </tr> <tr> <td>VGA</td> <td>DE15</td> </tr> <tr> <td>HDMI</td> <td>TypeA</td> </tr> <tr> <td>DVI</td> <td>DVI-A / DVI-I / DVI-D</td> </tr> <tr> <td>Composite</td> <td>BNC / Cinch</td> </tr> <tr> <td>DP (Apple)</td> <td>Mini-Display-port</td> </tr> <tr> <td>SDI</td> <td>BNC</td> </tr> <tr> <td>HD-SDI</td> <td>BNC</td> </tr> </table>	<i>Protocol:</i>	<i>Connector:</i>	VGA	DE15	HDMI	TypeA	DVI	DVI-A / DVI-I / DVI-D	Composite	BNC / Cinch	DP (Apple)	Mini-Display-port	SDI	BNC	HD-SDI	BNC
<i>Protocol:</i>	<i>Connector:</i>																
VGA	DE15																
HDMI	TypeA																
DVI	DVI-A / DVI-I / DVI-D																
Composite	BNC / Cinch																
DP (Apple)	Mini-Display-port																
SDI	BNC																
HD-SDI	BNC																

Cloud Nine Video – Plot (Top)



Cloud Nine Video – Plot (Side)

